



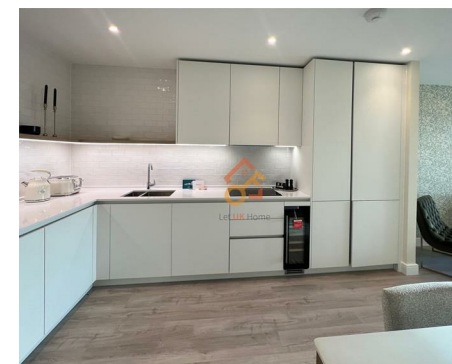
Let **UK** Home

3 Bedrooms

Flat

Located
in Wembley, London

£3,600 Per Month



info@letukhome.co.uk

<https://www.letukhome.co.uk/>

01795 358 886



4 Belgrave Road Wembley, London

HA0 1PX



Let UK Home present this spectacular three-bedroom property in Celeste House, part of the popular Grand Union development.

The flat comprises a spacious open kitchen with a stylishly attached dining area, a magnificent living room leading to a large private balcony with great views, three bright double bedrooms (the master and secondary bedrooms both come with wardrobes and en-suite bathrooms, with the master bedroom also featuring a spacious balcony), one modern family bathroom and ample storage.

Residents of this exceptional development will have exclusive use of fitness gym, bowling alley, screening room and residents lounge. Furthermore, residents will also benefit from a concierge and an unrivalled selection of shops, bars, restaurants, leisure facilities and beautiful courtyards.

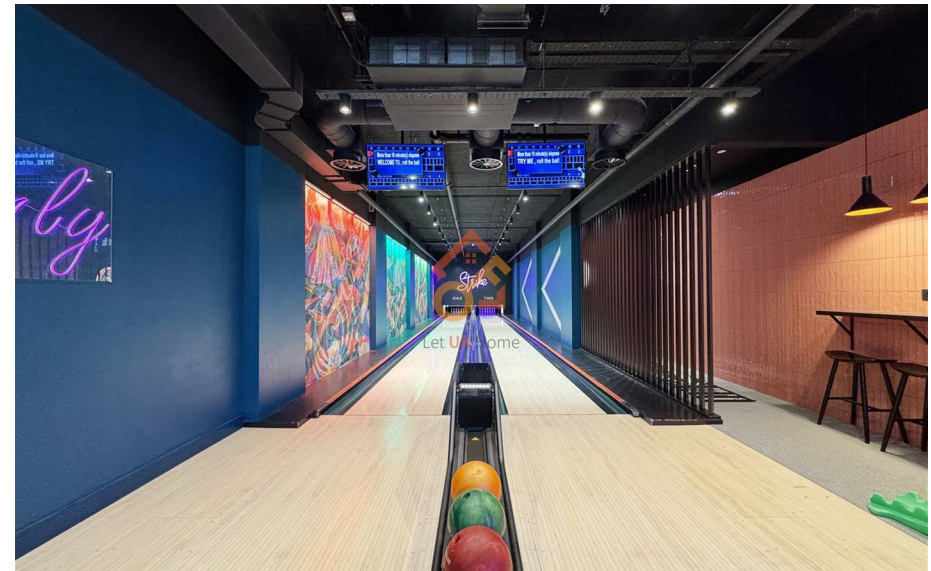
Grand Union is located in the Alperton between Wembley and Ealing, enjoying a variety of resources in both boroughs. There are many restaurants, bars, shopping malls, supermarkets, bank branches, post offices, etc. in the surrounding area.

4 Belgrave Road Wembley, London

£3,600 Per Month



- 5th Floor
- 24h Security
- Bowling Alley
- Concierge Service
- Cinema & Game Room
- Residents Lounge





Let **UK** Home

3F 2 Eastbourne Terrace
Paddington
London
W2 6LG

01795 358 886

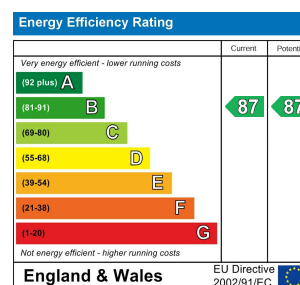
info@letukhome.co.uk



Council Tax Band: E

Local Authority:

Agents Note: Whilst every care has been taken to prepare these particulars, they are for guidance purposes only. All measurements are approximate and are for general guidance purposes only and whilst every care has been taken to ensure their accuracy, they should not be relied upon and potential buyers/tenants are advised to recheck the measurements.



<https://www.letukhome.co.uk/>